



TMCA LONE STAR CHAPTER



ONLINE SURVEY SUMMARY RESULTS

*Presented September 2, 2009
Lone Star Chapter Meeting
Plano, TX*



TMCA LONE STAR CHAPTER

ONLINE SURVEY SUMMARY REPORT

The Lone Star Chapter submitted an online survey to its members during the month of May, 2009. Twenty-four (24) responses were received and the response results are tabulated in this summary report. Please note that at the time the survey was submitted to members, it was noted that there were 55 members. Less than 50% of the members responded. Currently, the Lone Star Chapter has 53 active members.

The purpose of this online survey is to assess the productivity of the Lone Star Chapter and ensure that the Lone Star Chapter is currently providing and will continue to provide beneficial services to its members.

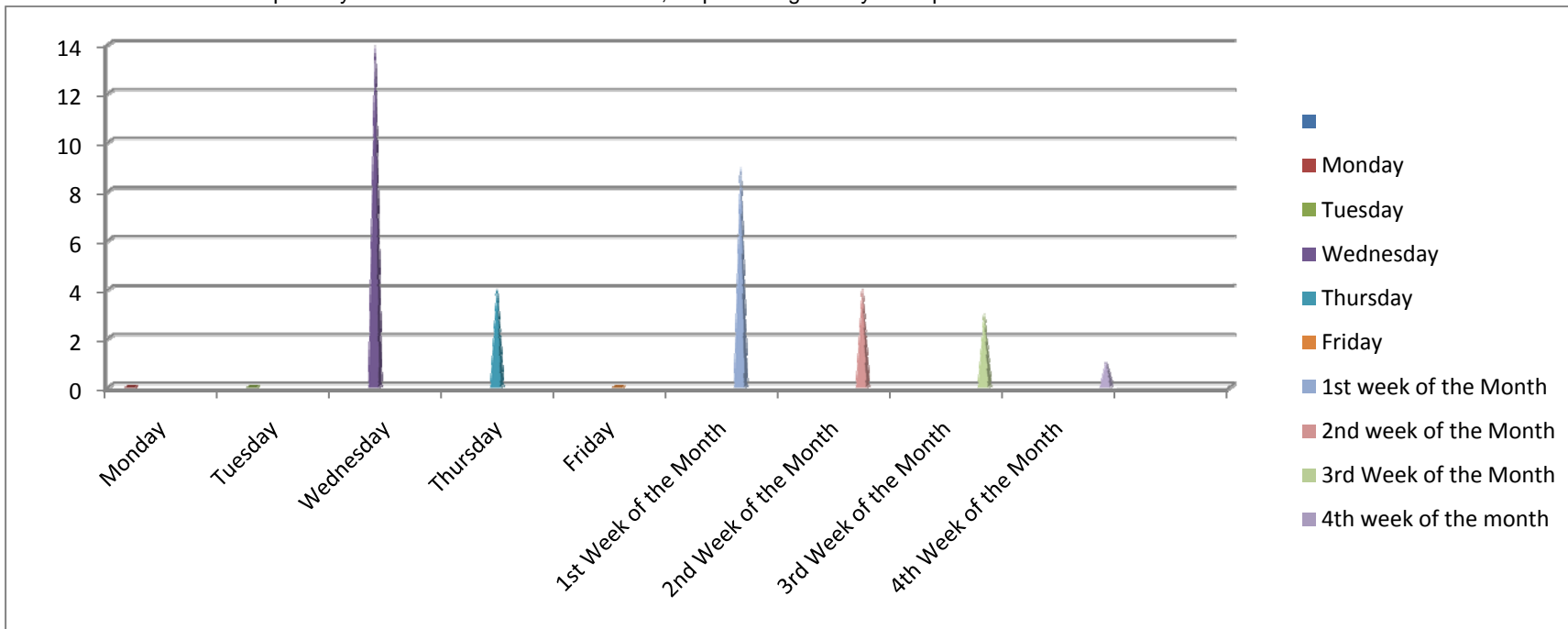
LSC ONLINE SURVEY RESULTS – QUESTION 1



Currently, the TMCA Lone Star Chapter meets on the 1st Wednesday of each month except for certain months. Please check a day and a week of the month that may work better for you.

Monday	0	0%
Tuesday	0	0%
Wednesday	14	58%
Thursday	4	17%
Friday	0	0%
1st week of the month	9	38%
2nd week of the month	4	17%
3rd week of the month	3	13%
4th week of the month	1	4%

People may select more than one checkbox, so percentages may add up to more than 100%.



LSC ONLINE SURVEY RESULTS – QUESTION 3

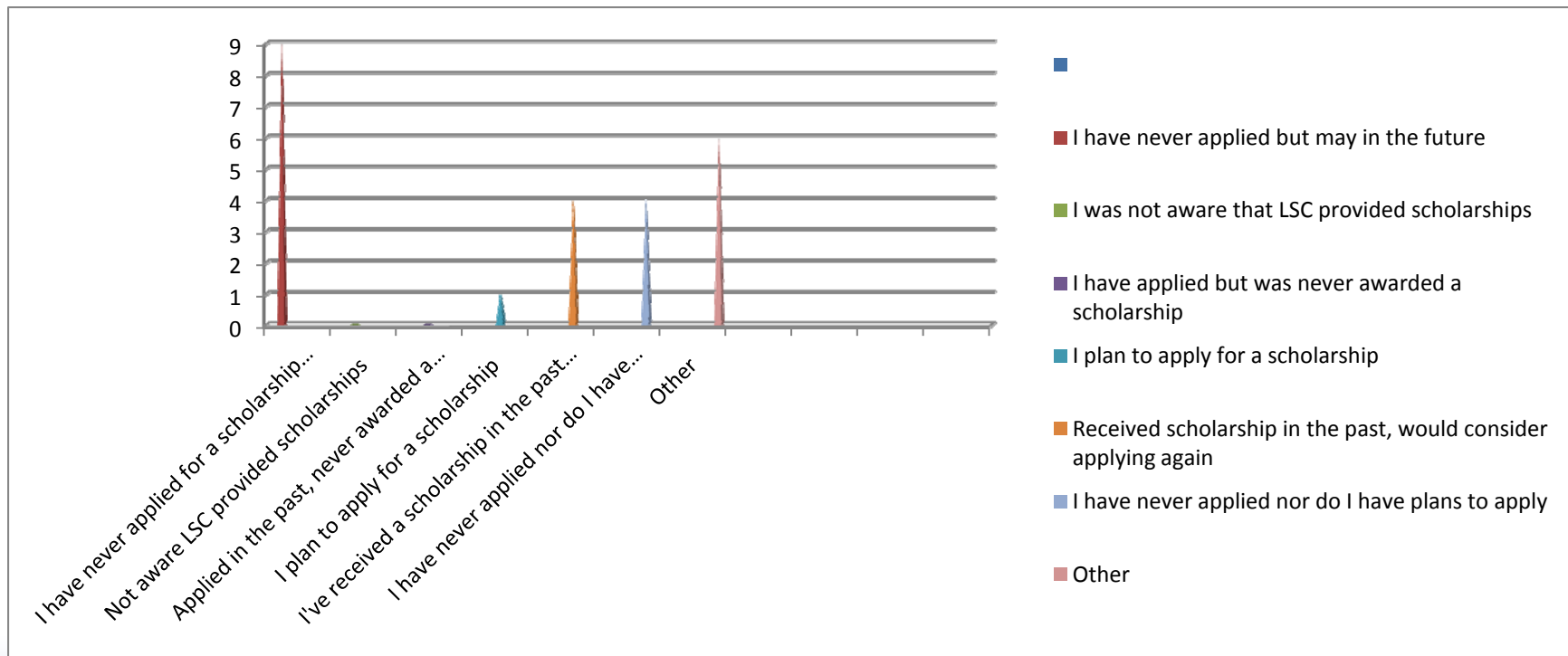


Currently, the TMCA Lone Star Chapter provides scholarships to its members which can be used towards a TMCA sponsored seminar or other organization seminars/training. Please tell us if you have ever applied or if you are interested in applying for a scholarship.

I have never applied for a scholarship but may in the future	9	38%
I was not aware that Lone Star Chapter provided scholarships	0	0%
In the past I have applied but was never awarded a scholarship	0	0%
I plan to apply for a scholarship	1	4%
I've received a scholarship in the past and would consider applying again	4	17%
I have never applied for a scholarship nor do I have any plans to apply	4	17%
Other (<i>see insert</i>)	6	25%

- OTHER:**
- **OTHER** was designated but no other information reported.

People may select more than one checkbox, so percentages may add up to more than 100%.



LSC ONLINE SURVEY RESULTS – QUESTION 4

TMCA Lone Star Chapter is committed to providing service to its members. What other services do you feel would be beneficial to you through TMCA Lone Star Chapter?

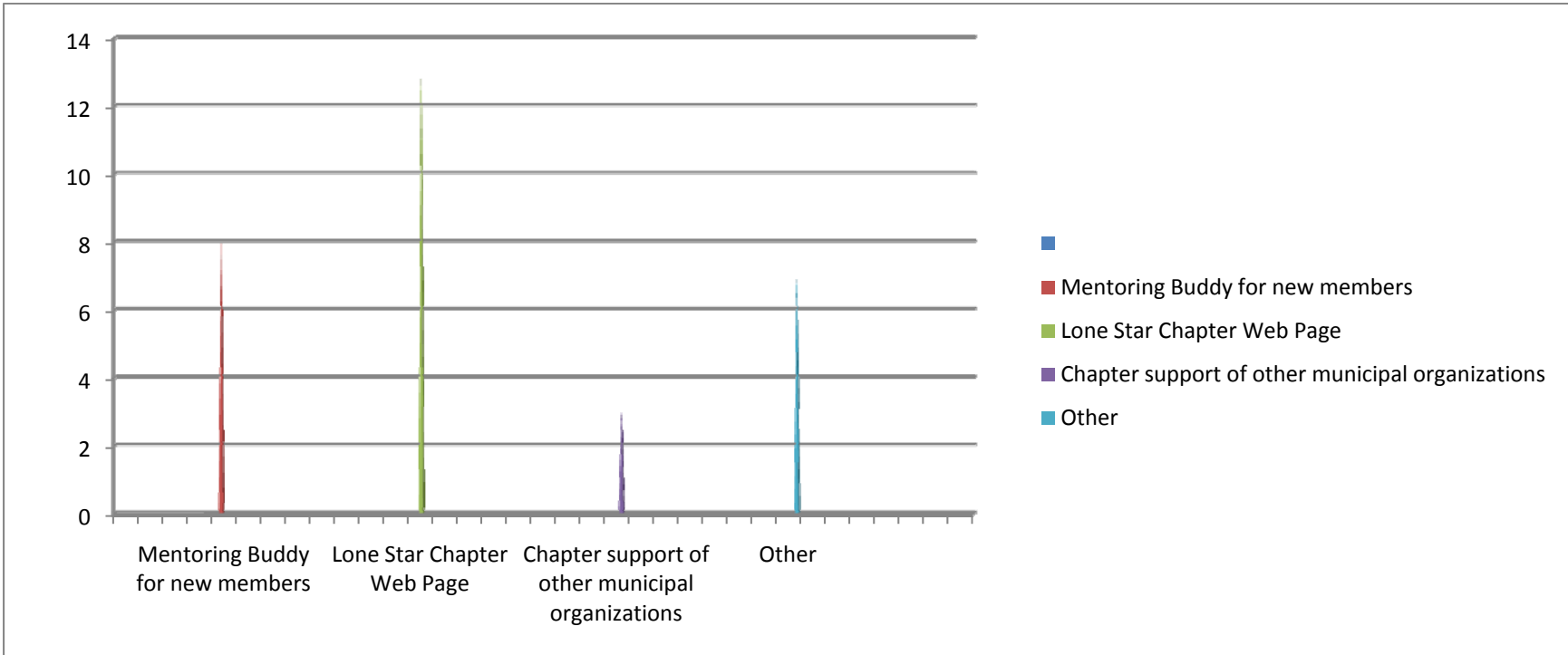


Mentoring Buddy for new members	8	33%
Lone Star Chapter Web Page	13	54%
Chapter support of other municipal organizations	3	13%
Other (<i>see insert</i>)	7	29%

OTHER:
 Other input noted by the participants:

- Invitations to non-member cities.
- **OTHER** was designated but no information reported.

People may select more than one checkbox, so percentages may add up to more than 100%.





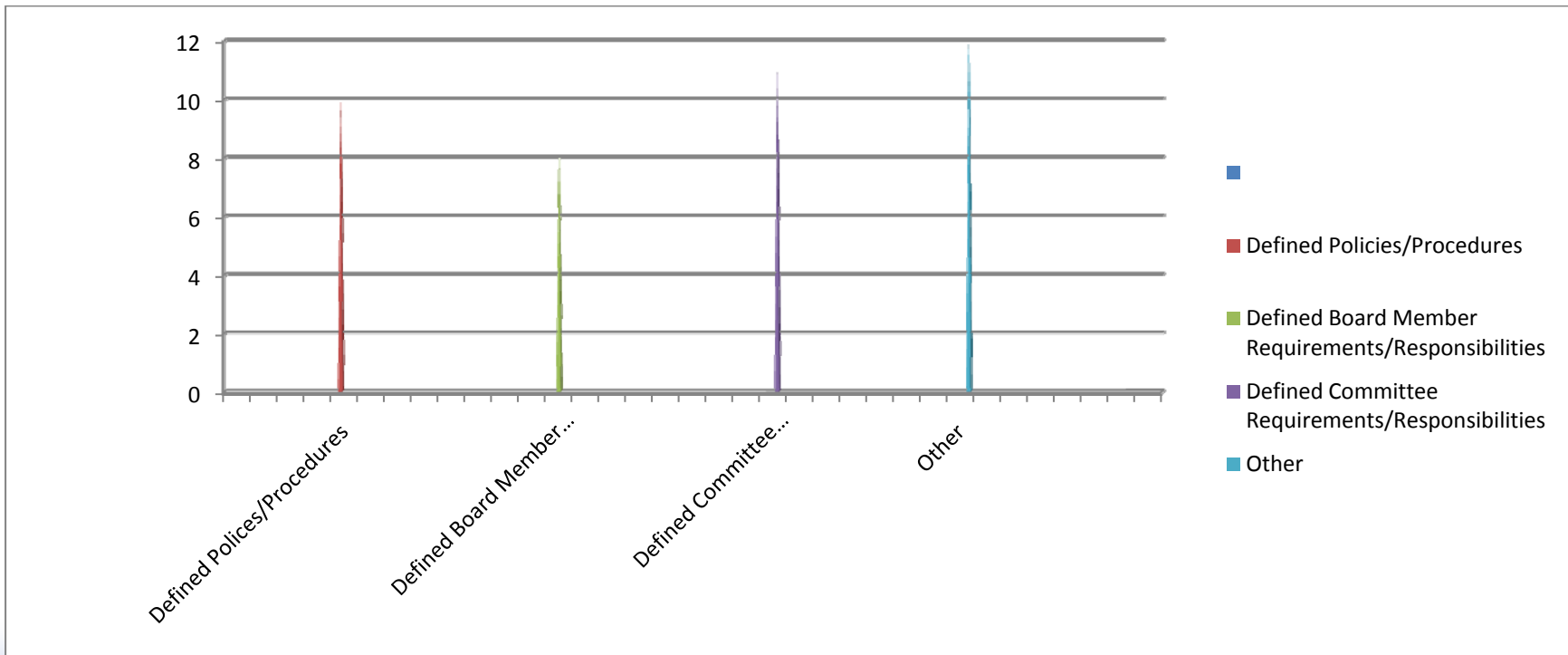
In the TMCA Lone Star Chapter Bylaws, what changes would you like incorporated?

Defined Policies/Procedures	10	42%
Defined Board Member Requirements/Responsibilities	8	33%
Defined Committee Requirements/Responsibilities	11	46%
Other (<i>see insert</i>)	12	50%

OTHER:
Other input noted by the participants:

- None
- Open Review of Sections
- None at this time
- Bylaws have not been read
- It would be good to have defined committee requirements and responsibilities if they are not already in the bylaws
- **OTHER** was designated by participants but no information reported.

People may select more than one checkbox, so percentages may add up to more than 100%



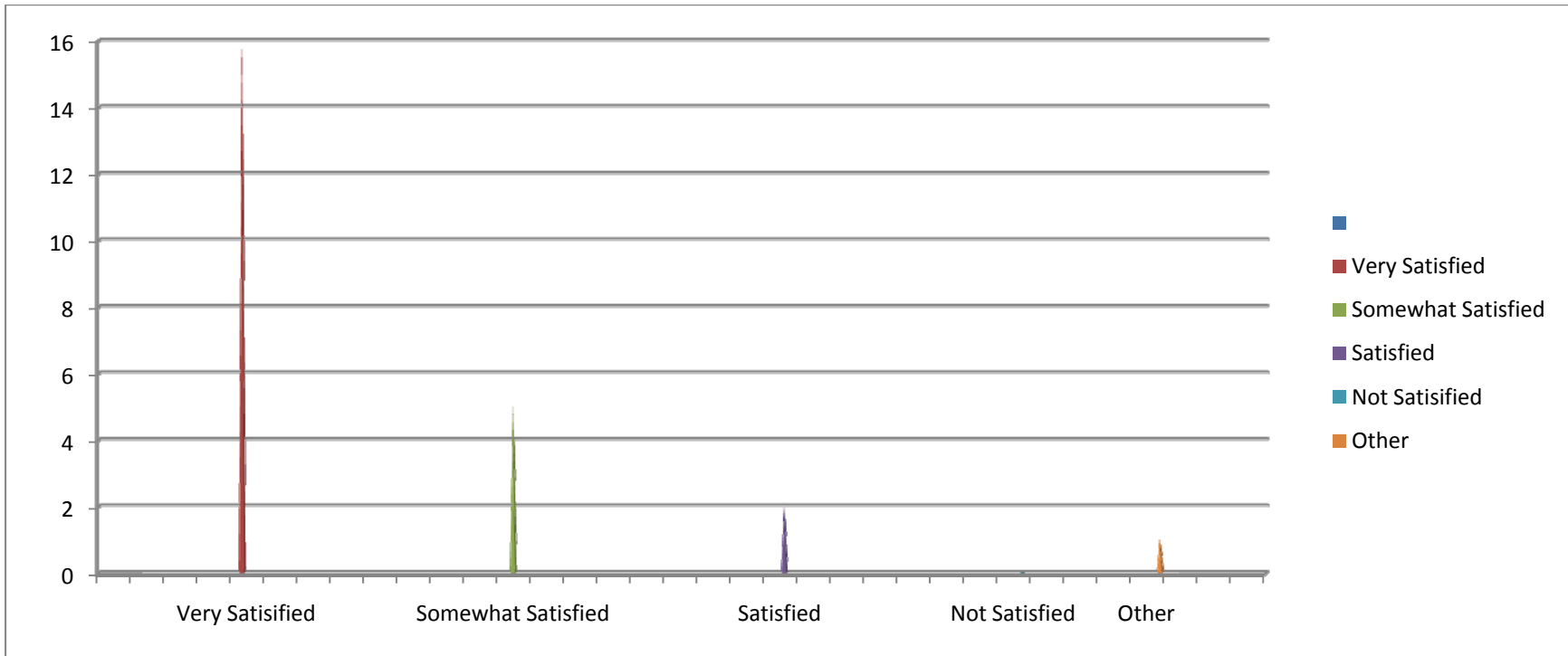


How overall satisfied are you with the services/membership provided by TMCA Lone Star Chapter?

Very Satisfied	16	67%
Somewhat Satisfied	5	21%
Satisfied	2	8%
Not Satisfied	0	0%
Other	1	4%

OTHER:
 Other input noted by the participant:
 • Conflict with my meeting current date;
 I don't feel I can make an informed choice due to my inability to attend.

People may select more than one checkbox, so percentages may add up to more than 100%.





We would appreciate any comments you may have.

COMMENTS PROVIDED:

- I am very proud of the Lone Star Chapter.
- We have come a very long way in just three years.
- We have hard working members that wish to make the Chapter the best it can be.
- All Chapters will have problems with attendance, due to the differences in scheduling of meetings at the staff and council level.
- Location of meetings will also have an effect on those that have to travel further for one particular meeting.
- I love the yahoo group. I've learned a lot reading over everything.
- We seem to run out of time on meeting topics. Maybe we should finish business/raffle then allow only ½ hours at end for topics if we are running late. Those that have to leave could and others could stay.